

State of Wyoming Corner Record

(In compliance with the *CORNER PERPETUATION AND FILING ACT*, Wyoming Statutes, 1997, Section 33-29-140, et. seq., and the Rules and Regulations of the Board of Registration for Professional Engineers and Professional Land Surveyors)

Reverse side of this form may be used if more space is needed.

Record of original survey and citation of source of historical information (if corner is lost or obliterated). Description of corner monumentation evidence found and/or monument and accessories established to perpetuate the location of this corner. Sketch of relative location of monument, accessories, and reference points with course and distance to adjacent corner(s) (if determined in this survey). Method and rationale for reestablishment of lost or obliterated corner.

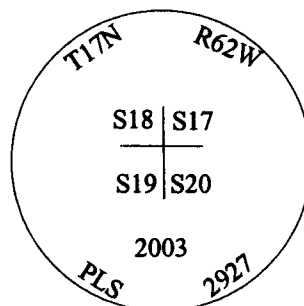
G.L.O. Record: Charles A. Canton, U.S. Deputy Surveyor, July 22, 1873.
 80.00 Chains Limestone 20 x 15 x 6 set 12 in deep marked with 3 notches on S side and 5 notches on E side for the cor to secs 17, 18, 19, 20,

Found: Railroad spike with red flagging around the neck, 8" below the asphalt surface of Laramie County Road No. 149. This spike was found to be harmoniously related to other found and accepted corners and accepted as a faithful perpetuation of the original and subsequent surveys.

Set: No. 5 x 24" rebar with a 2 1/2" diameter aluminum cap, marked as noted below, 0.2' below the asphalt surface.

See back of this sheet for measurements to other found and or set and accepted corners in the area.

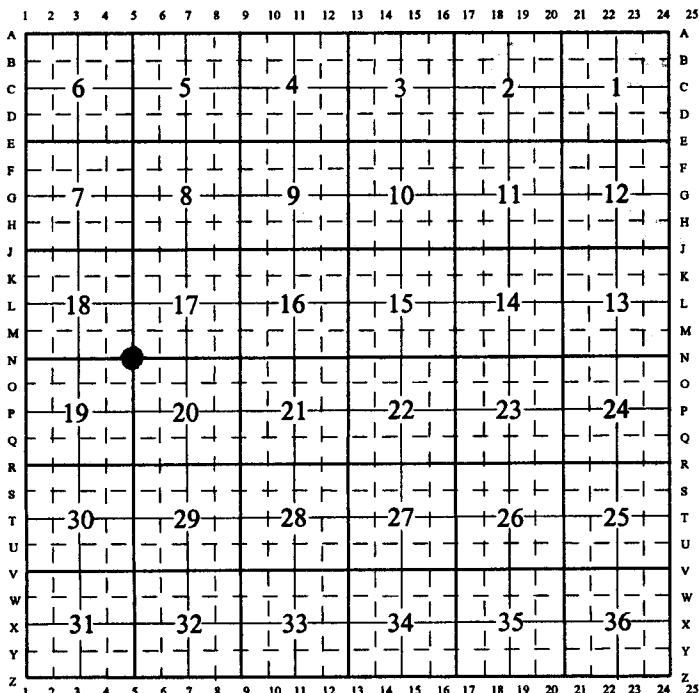
Aluminum Cap Markings



Date of Field Work: May 23, 2003

Office Reference: Burns North 26109

CROSS INDEX DIAGRAM

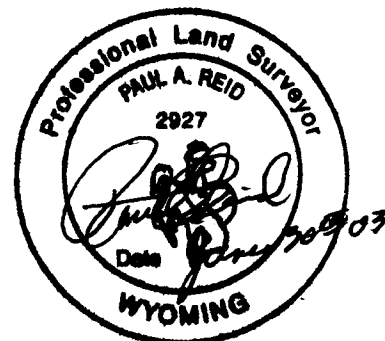


Firm/Agency, Address

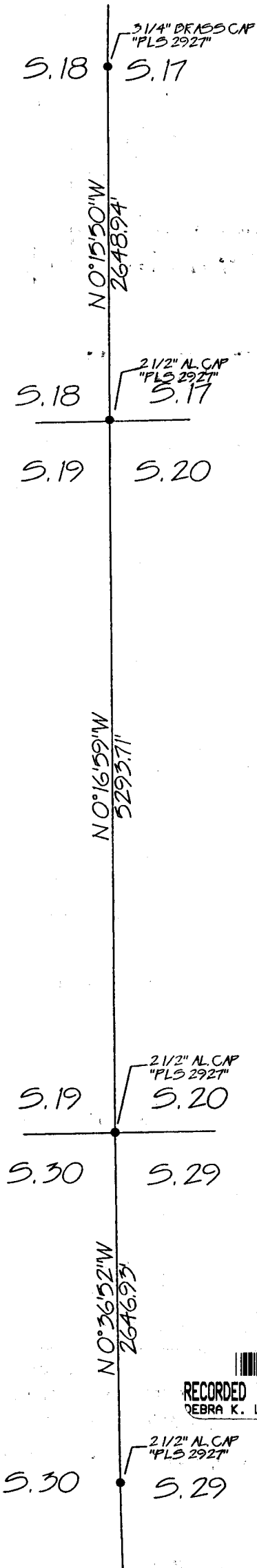
Paul A. Reid, PLS
 1533 Pinion Drive
 Cheyenne WY
 Phone (307) 637-3400

This corner record was prepared by me or under my direction and supervision.

SEAL & SIGNATURE



Corner Name: Northwest Corner Section: 20 T.17 N., R. 62 W., 6th P.M., Cross-Index No.: N-5
 SBRPEPLS/PLSW: MARCH 1994/97



Bearings are grid and based upon the Wyoming East Zone NAD 83. Geodetic bearings can be derived by applying -0°32'21" to the bearing.

RECORDED 6/30/2003 AT 9:59 AM REC# 356659 JK# 1738 PG# 619
DEBRA K. LATHROP, CLERK OF LARAMIE COUNTY, WY PAGE 2 OF 2